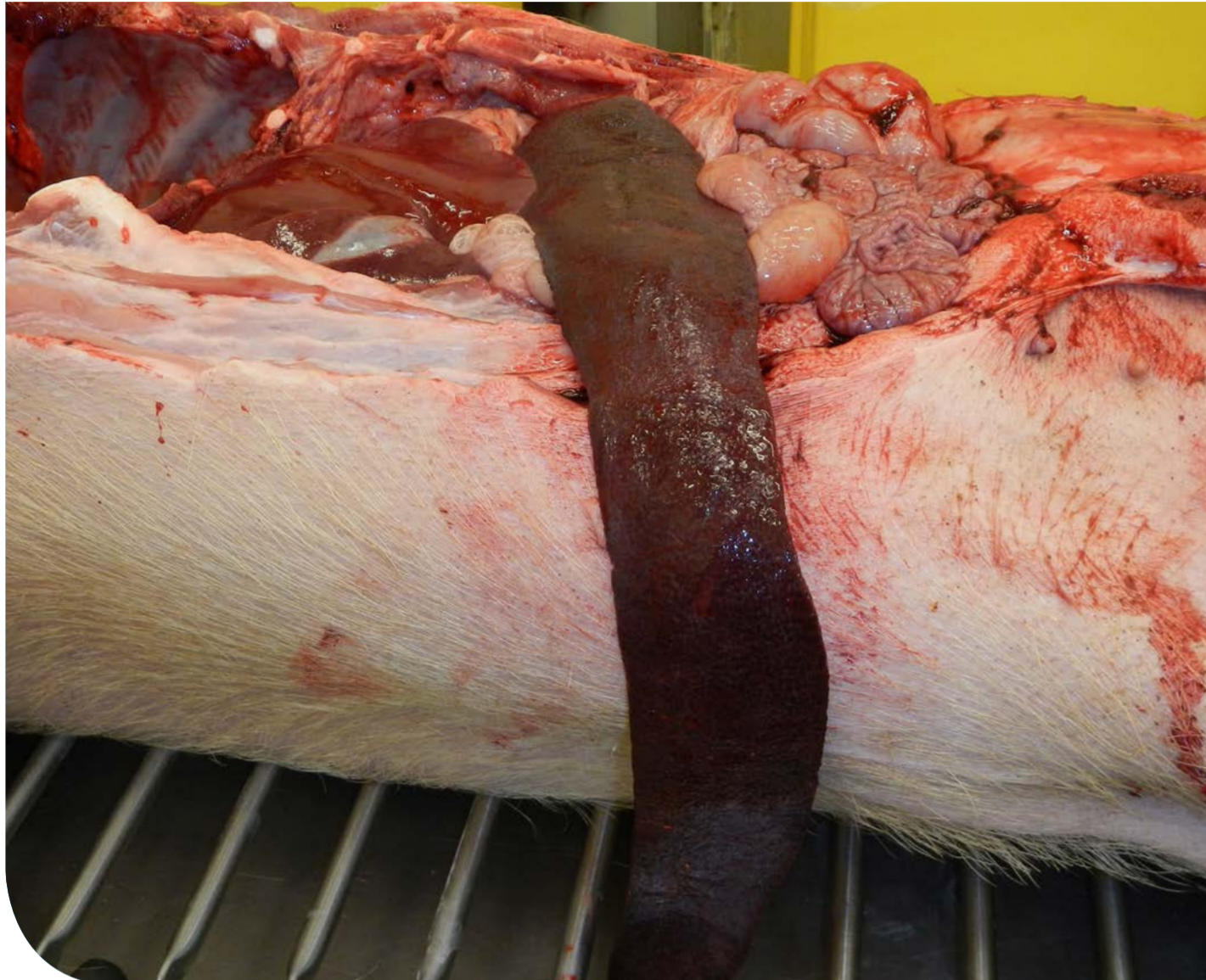


African Swine Fever

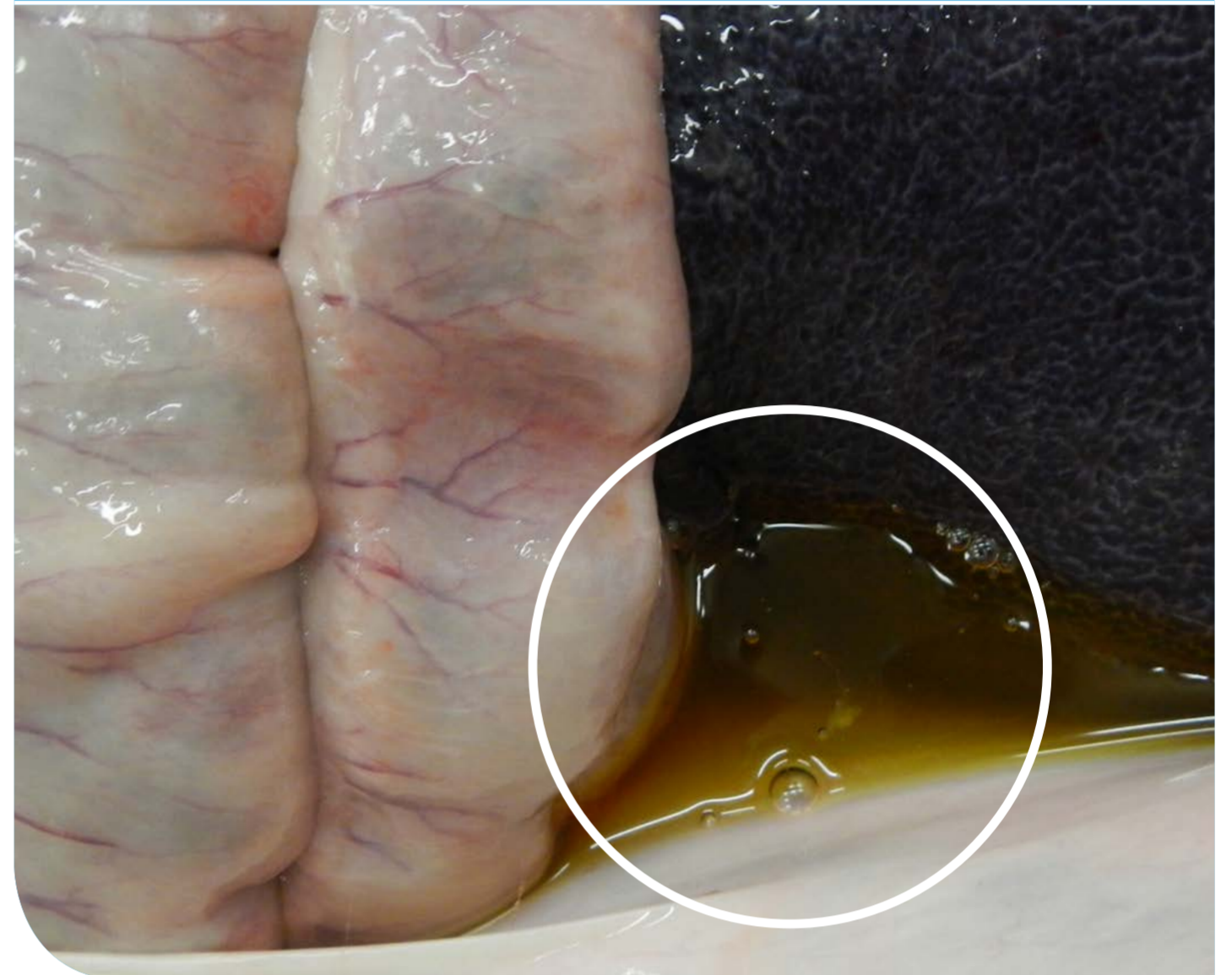
What to look out for on the line



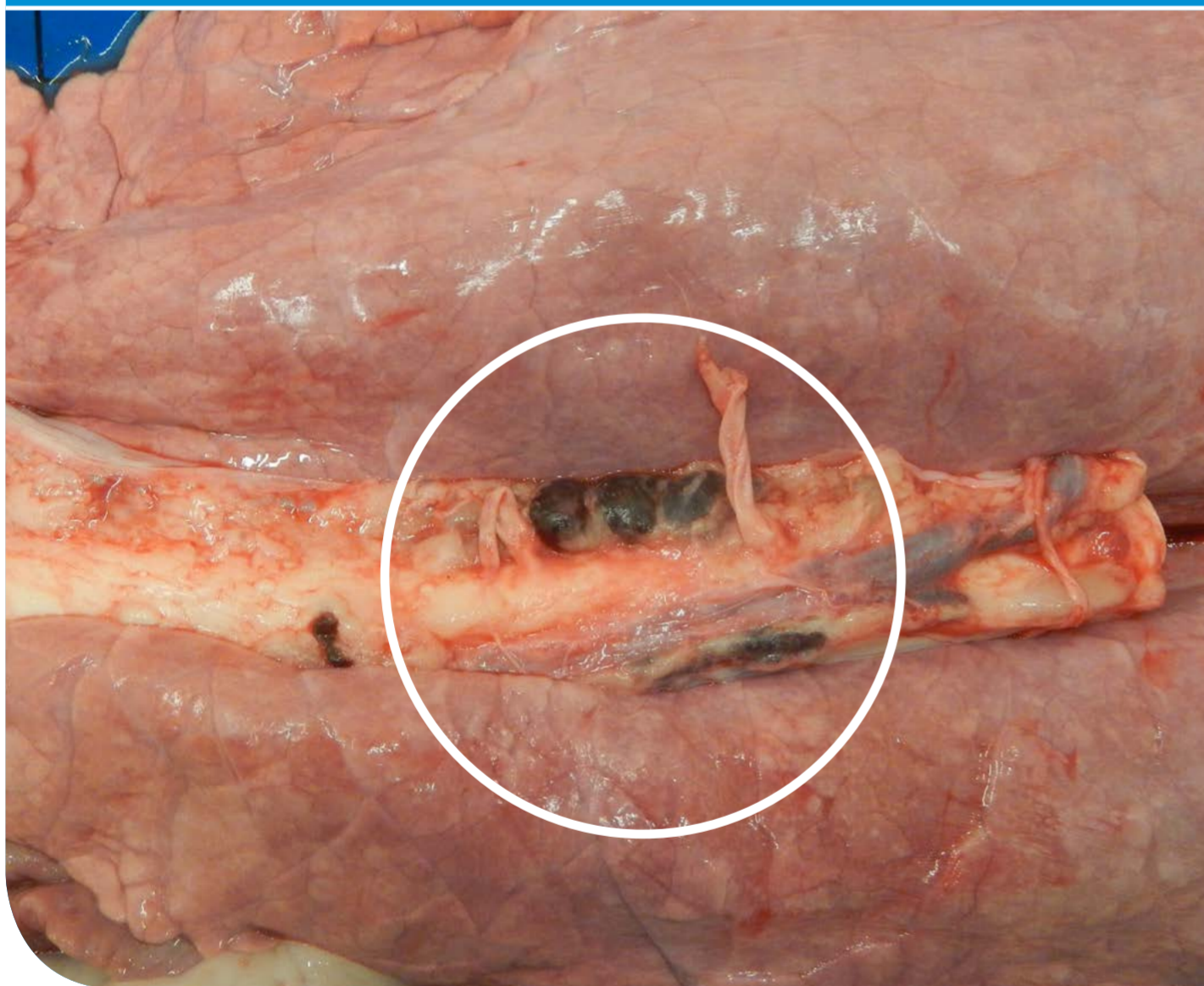
Enlarged, dark spleen



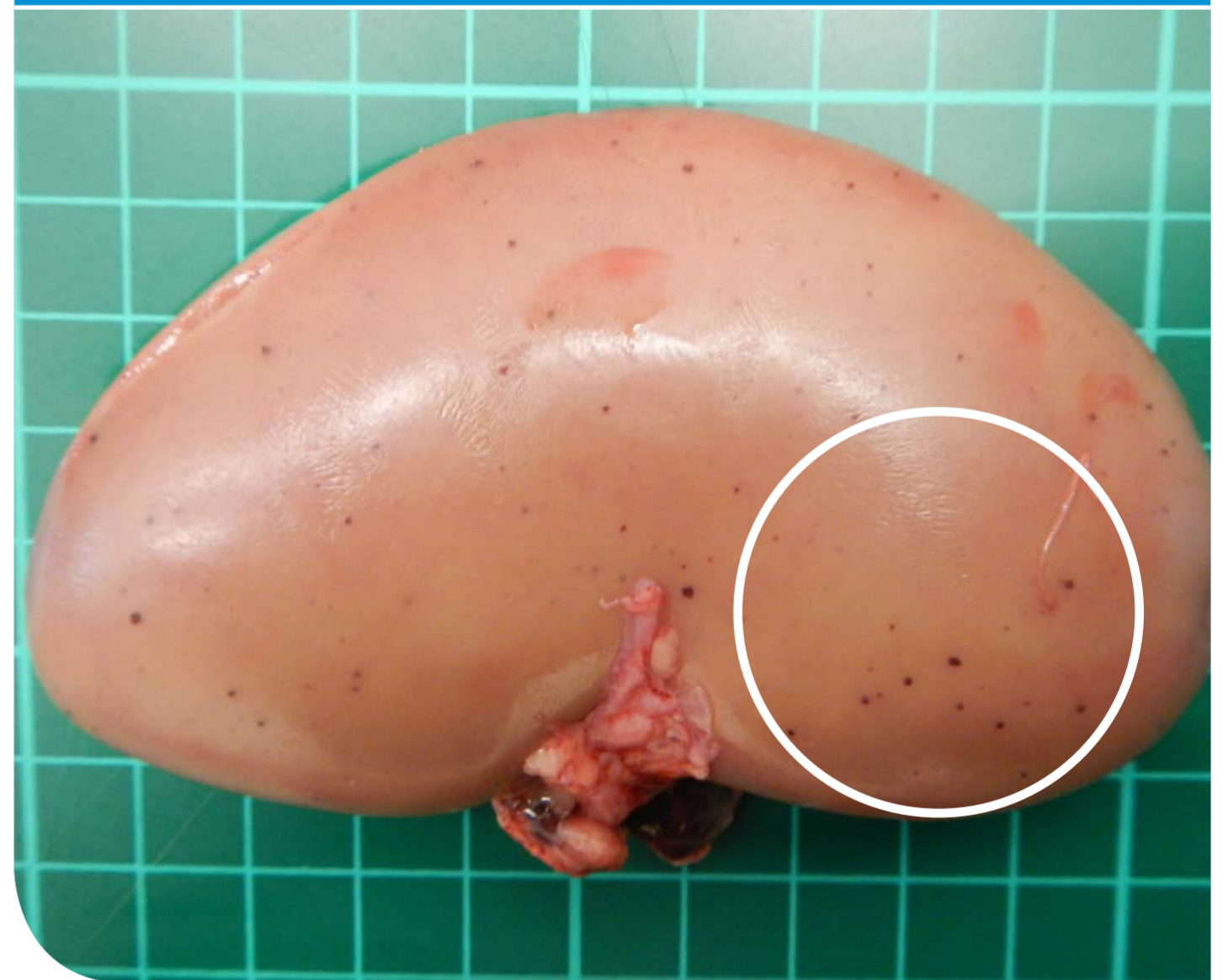
Excess yellow body cavity fluids



Enlarged reddened (almost black) lymph nodes



Haemorrhagic lesions in kidney



Images are courtesy and copyright of The Pirbright Institute.

NOTIFIABLE DISEASE
REPORT signs to Defra
Rural Services Helpline
on 03000 200 301

Produced for you by:

AHDB Pork
Stoneleigh Park
Kenilworth
Warwickshire
CV8 2TL

T 024 7669 2051
E comms@ahdb.org.uk
W ahdb.pork.org.uk
@AHDB_Pork

If you no longer wish to receive this information, please email us on comms@ahdb.org.uk

While the Agriculture and Horticulture Development Board seeks to ensure that the information contained within this document is accurate at the time of printing, no warranty is given in respect thereof and, to the maximum extent permitted by law, the Agriculture and Horticulture Development Board accepts no liability for loss, damage or injury howsoever caused (including that caused by negligence) or suffered directly or indirectly in relation to information and opinions contained in or omitted from this document.

© Agriculture and Horticulture Development Board 2019.
All rights reserved.

